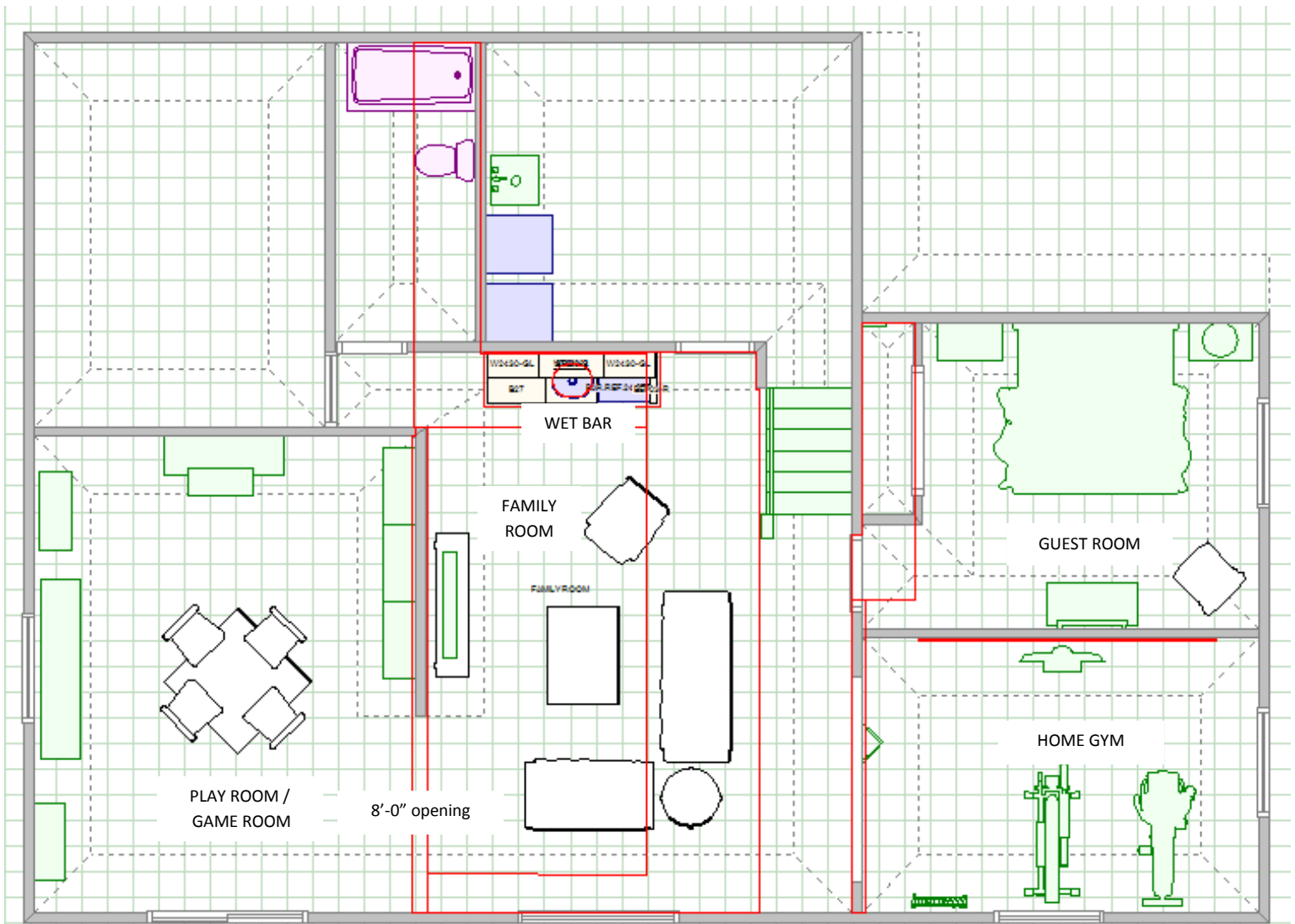


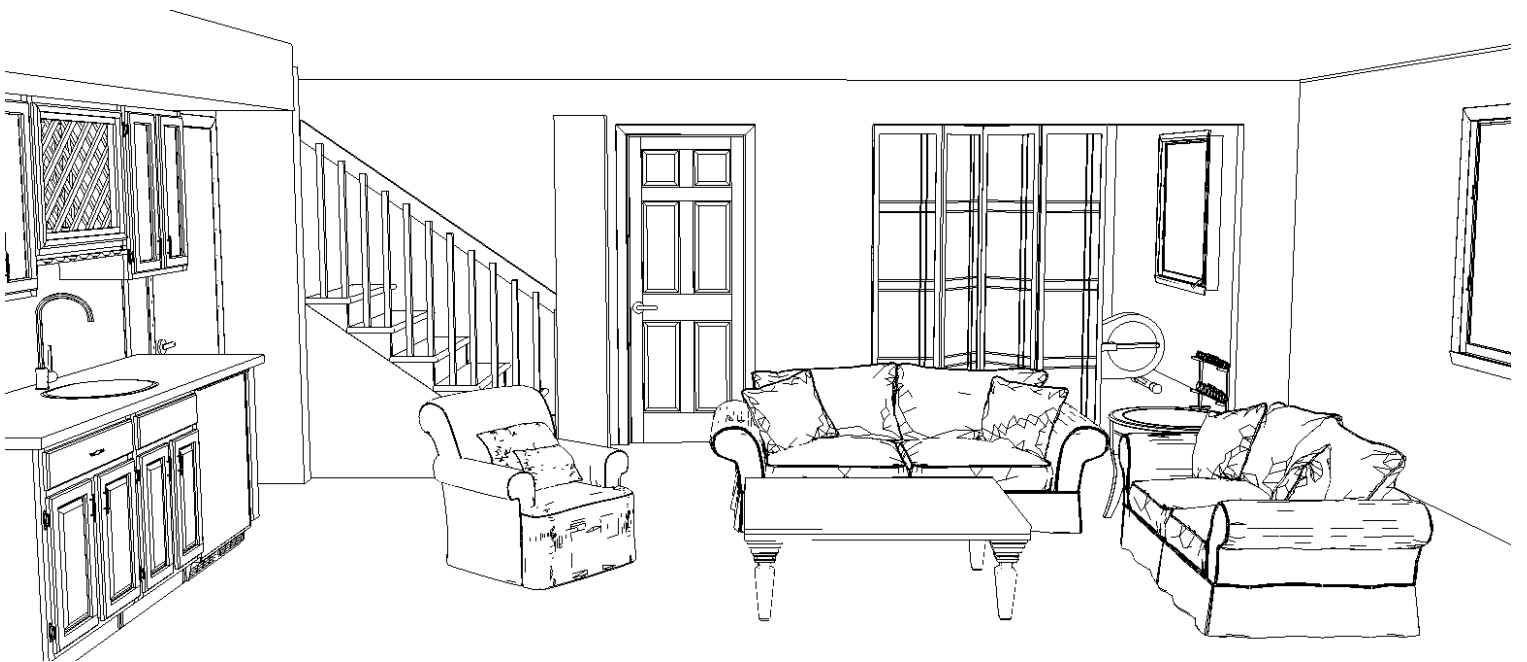
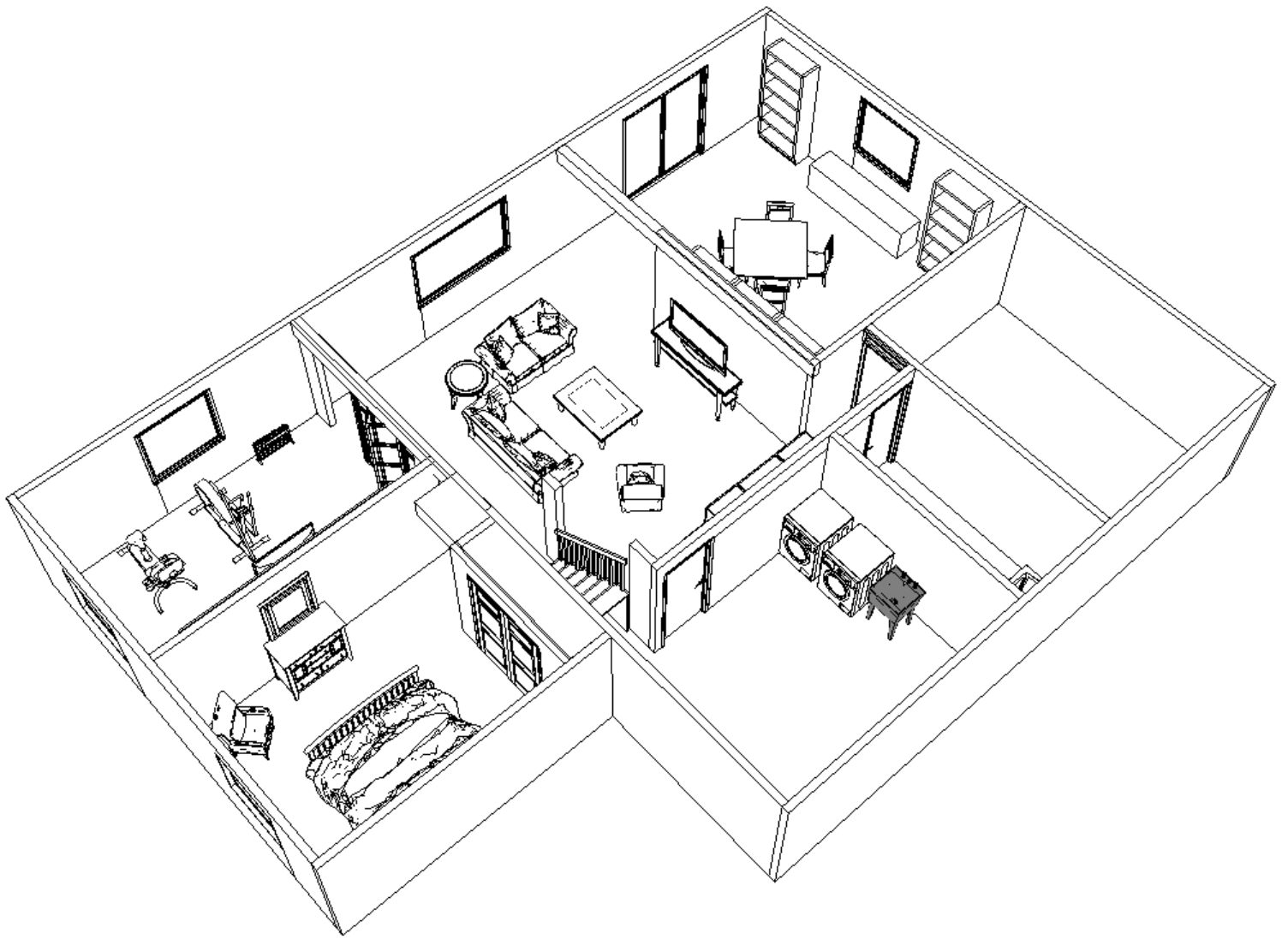
WOJCIK RESIDENCE: BASEMENT REMODEL
PRELIMINARY LAYOUT **OPTION B Revision 1** June 20, 2013

OPTION B Revision 1 DESIGN HIGHLIGHTS

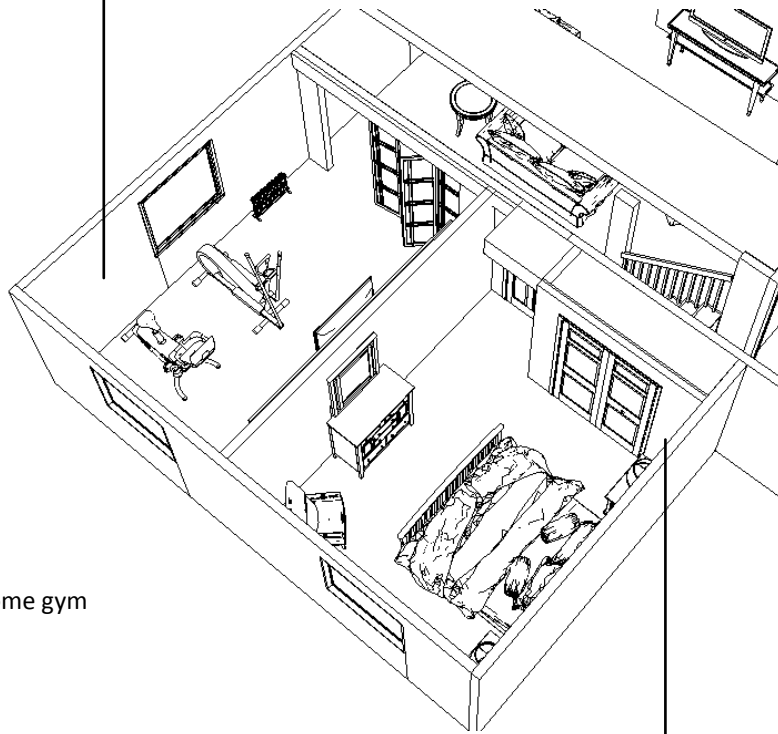
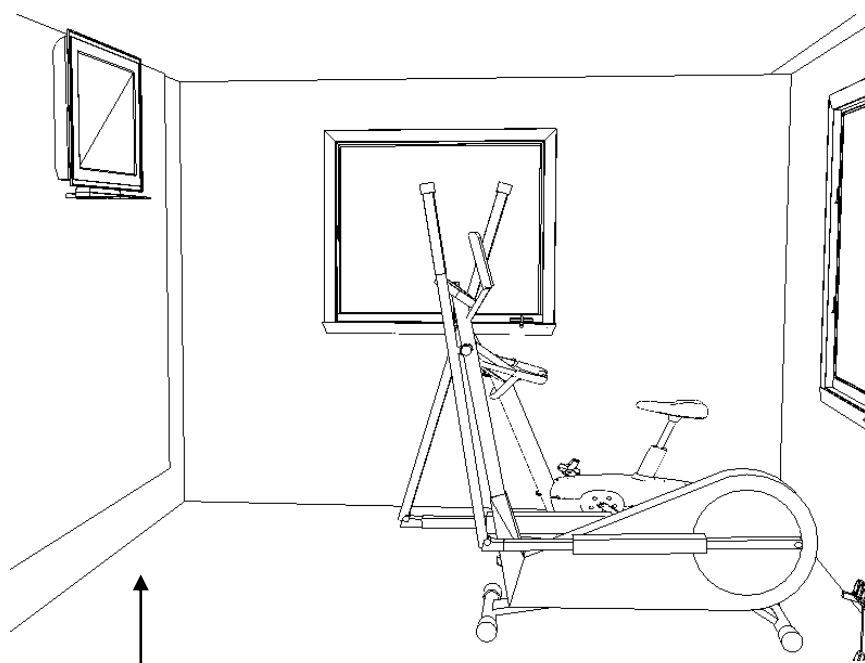
- Remove or fur out existing exterior walls as needed to eliminate small half walls
- Open up stairway to new Family Room with Wet Bar
- Playroom / Game Room wall connects to existing storage room wall, enclosing the post, and leaves an 8'0" opening into Play room / Slider doors
- New Home Gym is entered through Privacy Screens off of the family room (details t.b.d.)
- A large guest room is built directly off of the stairway access

Details of the revised layout will be given upon approval. All furniture / accessories are shown only to better visualize the possible function of the new spaces. Recommendations for cabinetry and privacy screen given along with construction drawings.



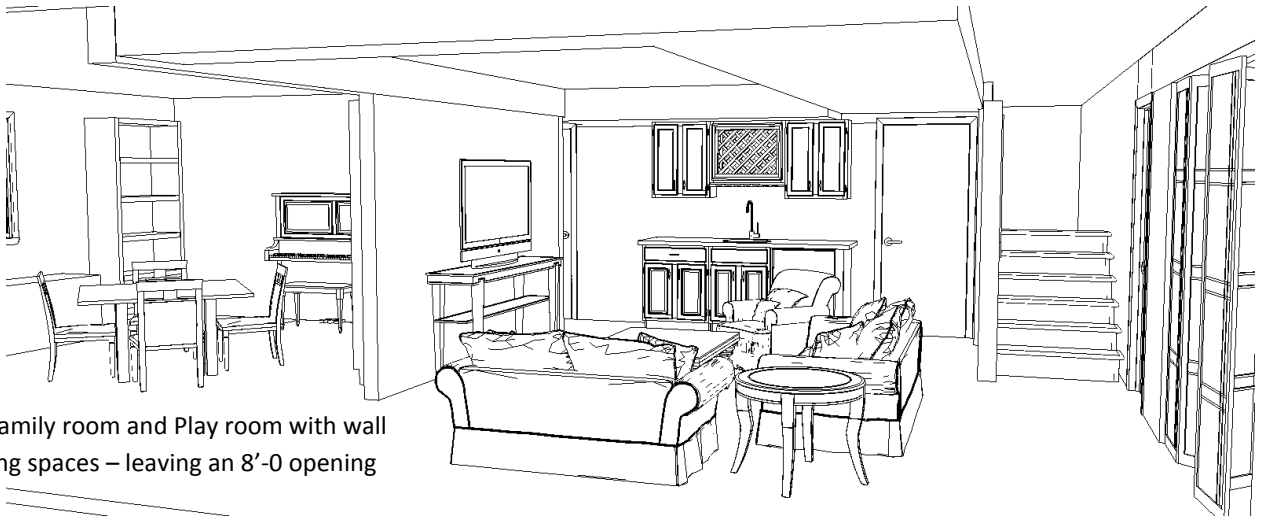


View of Family Room with stairwell opened up and Home Gym / Guest Room entrances. Home Gym privacy screen to be selected / Wet Bar cabinet details to be selected



Birds Eye view of new home gym
and Guest Room





View of Family room and Play room with wall separating spaces – leaving an 8'-0 opening



Playroom with large offset opening into the Family Room

Sump pump access in 'new' window seat / storage below window

